



Wheels

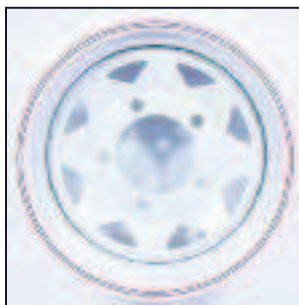
Wheels

Chrome Steel - 8 Spoke

BA 014A

15"x8"

Series / Defender 90&110 /
Discovery 1 / Range Rover
Classic



White Steel - 8 Spoke

BA 014B

15"x8"

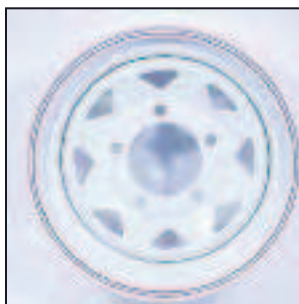
Series / Defender 90&110 /
Discovery 1 / Range Rover
Classic

Heavy Duty Steel (Wolf)

ANR4583P

16"x6.5"

Series / Defender 90&110 /
Discovery 1 / Range Rover
Classic



White Steel - 8 Spoke

BA 015AS

16"x7"

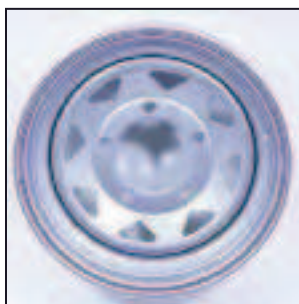
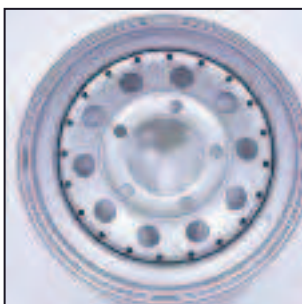
Series / Defender 90&110 /
Discovery 1 / Range Rover
Classic

Grey Steel Modular

BA 015CS

16"x7"

Series / Defender 90&110 /
Discovery 1 / Range Rover
Classic



Silver Steel - 8 Spoke

BA 3403

16"x7"

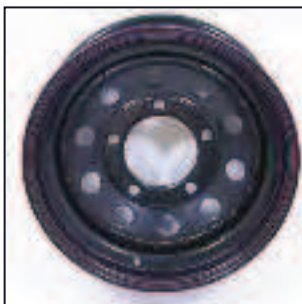
Series / Defender 90&110 /
Discovery 1 / Range Rover
Classic

Black Modular

BA 015DS

16"x7"

Series / Defender 90&110 /
Discovery 1 / Range Rover
Classic



Black Modular

BA 015ES

16"x8"

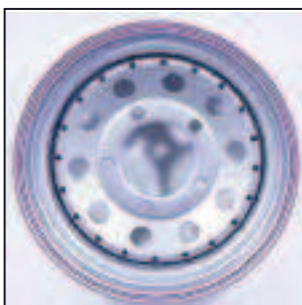
Discovery 2 / Range Rover
P38

Silver

BA 015F

16"x8"

Series / Defender 90&110 /
Discovery 1 / Range Rover
Classic



Compomotive Rally Raid Alloy

BA 3421

16"x7"

For heavy off-road competition

Defender 90&110 /
Discovery 1 / Range Rover
Classic



Compomotive VS Alloy

BA 3401

16"x7"

Including wheel nuts and caps

Defender 90&110 /
Discovery 1 / Range Rover
Classic



Similar to SVX Wheel Alloy

BA 3402

16"x7"

Including wheel nuts and caps

Defender 90&110 /
Discovery 1 / Range Rover
Classic

Silver Freestyle Alloy

BA 3417

16"x7"

Defender 90&110 /
Discovery 1 / Range Rover
Classic

Boost Alloy - Silver Sparkle

RRC503400MNH

16"x7"

Defender 90&110 /
Discovery 1 / Range Rover
Classic



Ranger 5 Spoke

BA 3440

16"x7" PCD 5X165

Finished in hi-power silver

Defender / Discovery /
Range Rover

Compomotive Rally Raid

BA 3422

16"x7"

For heavy duty off-road
competition

Discovery 2 / Range Rover
P38



Replica 5 Spoke Alloy

BA 3419

16"x8"

Discovery 2 / Range Rover
P39

Equinox II

BA 3446

17"x7.5" PCD 5x108

Multi spoke, comes in hi-power
silver paint finish and a chromed
stainless steel rim.

Freelander 2



Rimfire 5 Spoke

BA 3441

18"x8" PCD 5x120

One of the strongest wheels
around, coming in hi-power silver

Discovery 3 / Range Rover
L322 / Range Rover Sport

Wheels

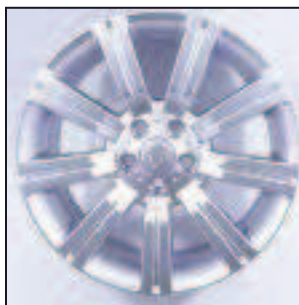
Equinox II

BA 3447

18" x 8.5" PCD 5x108

Multi spoke, comes in hi-power silver paint finish and a chromed stainless steel rim.

Freelander 2



Stormer "look-a-like" Alloy

BA 3420

20" x 9"

Higher load rating than O.E. Will fit other models with adaptors

Discovery 3 / Range Rover L322 / Range Rover Sport

Equinox II

BA 3442

20" x 8.5" PCD 5x120

Multi spoke, comes in hi-power silver paint finish and a chromed stainless steel rim.

Discovery 2&3 / Range Rover Sport / Range Rover L322



Equinox II

BA 3443

20" x 9.5" PCD 5x120

Multi spoke, comes in hi-power silver paint finish and a chromed stainless steel rim.

Discovery 2&3 / Range Rover Sport / Range Rover L322

Prorace

BA 3445

20" x 9" PCD 5x120

Silver alloy wheel meticulously manufactured to minimise weight.

Discovery 2&3 / Range Rover Sport / Range Rover L322



Equinox II

BA 3444

22" x 8.5" PCD 5x120

Multi spoke, comes in hi-power silver paint finish and a chromed stainless steel rim.

Discovery 2&3 / Range Rover Sport / Range Rover L322

